



COMPANY PROFILE

Innovation and Experience in Air Movement





From the specialised
and bespoke to our off-the-shelf
range, **we offer performance
optimised air movement
solutions** for your applications.



OUR VISION

We are totally committed to serve the needs of all our customers. We value every opportunity to demonstrate continually improving service through innovation that enhances customer satisfaction and builds stronger relationships.

Woods Air Movement is one of the world's leading designers and manufacturers of the highest quality Air Movement products with a focus on axial flow fans. Woods has dedicated product designs and business divisions dedicated to:

- Building and car park ventilation and fire safety
- Tunnel and metro ventilation
- OEM and industrial process ventilation
- Commercial kitchens ventilation

With more than one hundred years of industry experience we are constantly innovating and

adapting to the ever-changing environment.

We not only offer a range of products which we are always improving and adding to, but we also work with our customers to provide them with a product that meets their bespoke design requirements; from minor customisations to complete product development.

We focus on our customers needs and take a high customisation approach to tailor our products to our client's application and commercial needs.

We offer one of the world's largest high temperature certified fans (up to F400).

Building on more than 100 years of innovation

Woods was founded in 1909 in Colchester, United Kingdom. We began as manufacturers of small electric motors and introduced a range of propeller fans in the 1920s.



Over the years, Woods moved away from manufacturing motors and concentrated on the design and manufacture of axial fans, developing the first aerofoil blade design. This continuous development has evolved into one of the world's largest ranges of certified axial fans for almost any application imaginable including fire safety, ventilation, industrial process, oil and gas and marine.

Woods was merged with Fläkt in 2002 to create Fläkt Woods which was subsequently merged with Denco Happel in 2016 to create FläktGroup. In 2020, Fläkt Woods changed their trading name to Woods Air Movement under FläktGroup holdings and opened offices in the United States of America and Germany.

Woods has over 100 years of experience and knowledge in designing axial flow fans and remains a distinct brand within the FläktGroup family.





OUR FOOTPRINT

Our head office is situated in Colchester in the United Kingdom with the state of the art (16.500 sqm) factory to produce around 100000 fans annually for the global market. We also have a factory and office in the United States of America and an office situated in Germany. In India we have installed one of the first test rigs in the country. Our products are distributed and reach various markets globally, through strong partnerships with over 70 international distributors and agents.

A complete fan range

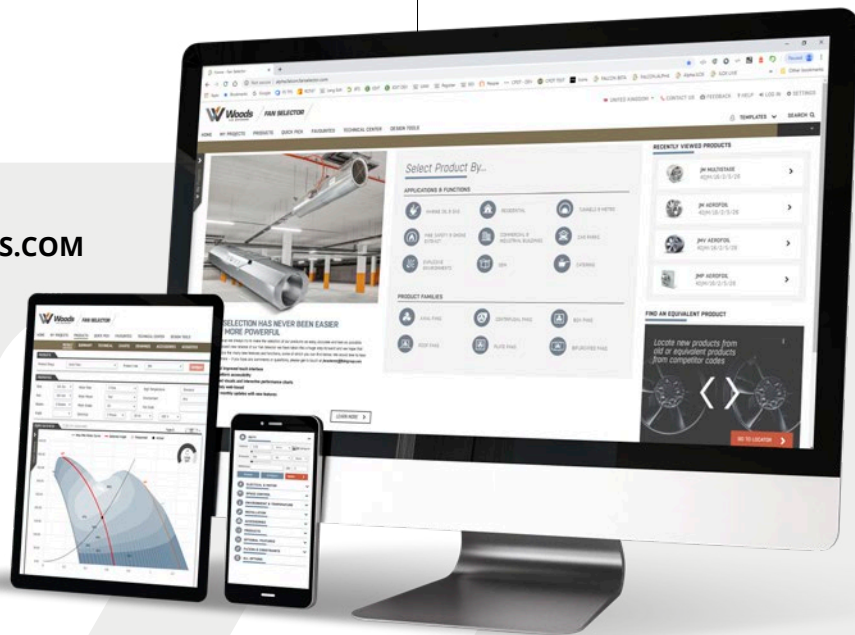
We manufacture the most reliable and best quality air movement and ventilation products for various applications and industries. To ensure you receive the best quality, we run various tests on our fans before they are delivered to your doorstep.

Most of our product range are available as standard or high temperature, please contact one of our sales team members to find out more technical information on our products. If any of products do not meet your requirements then we have inhouse capabilities to assist with designing, engineering and manufacturing the perfect solution for you.

ENSURING THE BEST POSSIBLE QUALITY IN EVERY DETAIL

- All moving parts in our fans are x-rayed to ASTM E155 standards.
- We ensure our products follow the ISO1940 Balance standards and Vibration BS848 pt 7 ISO14694.
- Our fans endure impeller strain gauge tests of speed over 125% for 15min.

> **WOODSAIRMOMEMENTS.COM**



PRODUCT SELECTION AND CONFIGURATION HAS NEVER BEEN EASIER – OR MORE POWERFUL

We always try to make the selection of our products as easy, accurate and fast as possible. With the brand new release of our Fan Selector we have taken a huge step forward and we hope that you will enjoy the many new features and functions – including web-based multi-platform accessibility with touch interface and interactive performance charts.



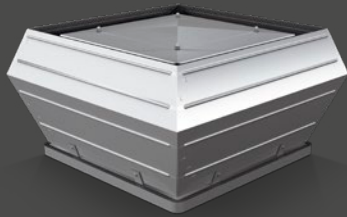
JM Aerofoil fans



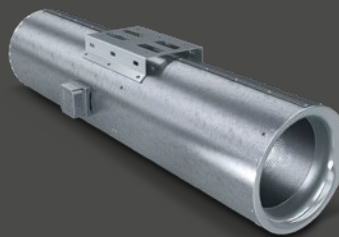
JMv Aerofoil fans



JMvG Aerofoil fans



Roof fan units



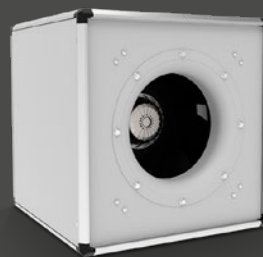
Car Park Jet fans



Bifurcated fans



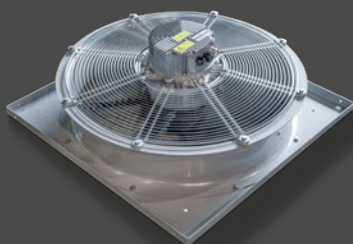
HT Fan & Inverter package
EN12101:3-2015



Box fans



ATEX fans



Clima Fan



AC and EC Plate Fans



Bespoke Solutions

APPLICATIONS

Our products are designed to serve a wide range of applications. Every day they deliver comfort and safety in critical situations to millions of people around the world. Our dedicated team of experts will always ensure that you get the optimal solution for your needs.



OUR APPLICATION AREAS



BUILDINGS

- Smoke Extraction
- Stairwell Pressurisation
- Atrium Extract

As buildings get taller, so does the challenge to ventilate them, so the need for more robust and intelligent air quality, control smoke and life protection systems. These systems provide comfortable air quality conditions for the occupants, as well as assist their evacuation during emergency conditions.

We have a range of products that can be used for this application to ensure we can give you the perfect solution.



CAR PARK SYSTEMS

- Underground Car Parks
- Jet Thrust Systems
- Fully Ducted Systems
- Smoke Control
- Pollution Control

We have a dedicated in-house team of car park design experts who can assist using CFD (Computational Fluid Dynamics) software to find the best and optimized and tailored solution for your project whether it be day-to-day pollution control or emergency smoke extract mode.

Our expert team will ensure they follow applicable local codes and standards. We offer a turnkey solution to our customers with their projects where we provide product selection, system design, controls and sensors, installation, as well as commissioning and maintenance with local partners.



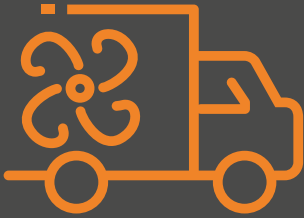
TUNNEL AND METRO

- Road Tunnels
- Rail Tunnels
- Metro Systems

Tunnel and Metro ventilation is required to manage day to day ventilation and pollution control and smoke extract in the case of a fire. We manufacture bespoke solutions for tunnel ventilation to smoke extraction.

We offer more than just a product, we have a team of experts who design optimal solutions, calculate pressure drop and noise calculations, offer product testing, installation guidance, support and commissioning assistance globally.

OUR APPLICATION AREAS



COMMERCIAL KITCHENS AND RESTAURANTS

- Kitchen Extract
- Roof Ventilation
- Roof Extraction
- Restaurant Ventilation
- Bakery Extract
- Toilet Ventilation
- Flue Dilution System Fan Assist

The distribution division focuses on a standard product range available on very short lead times (often next day delivery) Air Movement products; kitchen canopy systems, flue dilution, smoke extract, installers, facilities management and the refurbishment sector.

We work in partnership with a network of distributors across the UK and Europe. These partners hold stock so that it is readily available for our end users.



MARINE, OIL AND GAS

- Oil and Gas Pipelines
- Oil Rigs and FPSO
- Offshore support vessels
- Specialist ATEX fans
- Cruise Liners
- Naval Ships
- Container, cargo and LNG vessels
- Yachts

This application is a specialised market that requires specific and customised products. We have a range of stainless steel axial fans that can be used in these applications and an ATEX certification is available upon request. Not only do we have a stainless steel range of fans but we also have a dedicated range of marine fans that meet marine specifications.

Our team is available to assist with a turnkey solution by offering a full system with; marine AHU's, Axial fans, centrifugal fans, plug fans, ducts and diffusers, fire dampers and cabin units.



OEM AND INDUSTRIAL

- Power
- Radiators
- Load Banks
- Gas/Diesel Generators
- Power Stations
- Short Term Operating Reserve
- Wind Turbines
- Building Chillers
- Industrial Cooling and Condensing
- Adiabatic Coolers
- Heat Exchangers
- Air Blast Coolers
- Air Cooled Condensers
- Cooling Towers
- Industrial Processes
- Agriculture
- Components

Our team can assist with designing the perfect product or solution for your bespoke needs. We consider everything you require and ensure that what we deliver the installed performance you need. We provide bespoke products to everything from high volume OEM's to one off projects.

Engineering, testing and production capabilities

We have a team of engineers that work with the latest tools; Computer Aided Design (CAD), Finite Element Analysis (FEA) and Computational Fluid Dynamics (CFD). This ensures all of our product designs are always the optimal solution providing quality, safety and a long operational life.

We also have a dedicated team within our engineering department who are constantly working on product development so that we continuously improve our range of products.

Onsite at our Factory in the United Kingdom (and in India), we have an AMCA certified laboratory that offers customer witness tests. These customer witness tests can be done in person or through live video streaming. Our laboratory run various tests on our new products before they become part of our offering.

Our certified laboratory can offer the following certifications:

- Testing to ISO, AMCA, EN, BS, IEC
- Specific Aerodynamic Testing ISO 5801 Type C Code D cl. 33.5
- Acoustic Testing Semi Reverberant Area ISO 5136
- Vibration Testing ISO14694
- Thrust and Acoustic Testing ISO 13350

We have the following testing capabilities in our laboratory:

AERODYNAMIC



- ISO 5801 (BS 848 Pt1)
- ISO 13350 (BS 848 Pt10) Jet Fan Test

ACOUSTIC

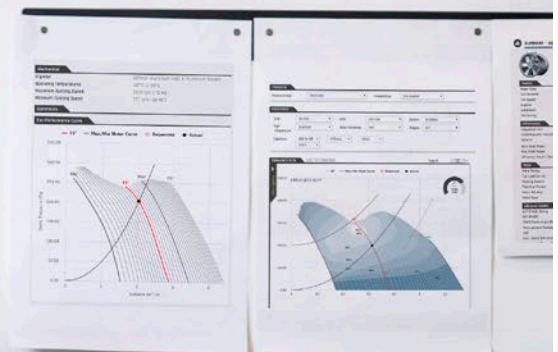


- ISO 5136 (BS 848 Pt 2) induct test systems
- ISO 3745 (BS 848 Pt2) semi-anechoic room 7.5m (W) x 8m (L) x 3.5m (H), minimum NR29
- ISO 13350 (jet fan) semi-reverberant environment 8m (W) x 20m (L) x 4m (H)
- Dual channel real time frequency analysis, general noise mapping in anechoic environment or with sound intensity, impeller noise traverses

HIGH TEMPERATURE



- 400°C test system for fans up to 3.55m capable of thermal shock and fan reversal
- Test system operates with a data acquisition system, providing raw and processed data directly on to a PC





Woods Air Movement Ltd. delivers smart and energy efficient Air Movement and Fire Safety solutions to support every application area. We offer our customers innovative technologies, high quality and outstanding performance supported by more than fifty years of accumulated industry application experience. The widest range of Air Movement and Ventilation products in the market, and strong market presence with over 100 years of experience and manufacturing of products, guarantees that we are always by your side, ready to deliver Excellence in Solutions.

**Contact our friendly sales team today
for more information**

Call: +44 (0) 1206 222 555

Email: quotations.woods@flaktgroup.com

www.woodsairmovement.com

