



# PowerBox<sup>3</sup> The new standard in box fan performance

**SUPPLY AND EXHAUST CENTRIFUGAL BOX FAN**





---

### POWERBOX<sup>3</sup>

**A newly developed  
range of box fans with  
higher static efficiency  
and very low breakout  
sound levels**



Standard model  
up to 122 °F

---

T120 model  
up to 248 °F

The new PowerBox<sup>3</sup> range offers high efficiency, very low breakout sound levels and is suitable for air temperatures up to 248 °F. Available in seven inlet sizes from 315 mm up to 630 mm (12.4 inches to 24.8 inches) with three phase electrical connection options (dependent on size). With a max airflow up to 10,000 CFM, max static pressure up to 4.4 inwg and a pre programmed inverter drive to operate of 60 Hz, the PowerBox<sup>3</sup> fan caters to a wide variety of applications, including high temperature and steam.

Our sales and engineering teams are committed to provide you with exceptional products and technical guidance as well as ensuring your logistical needs are met. All Woods Air Movement fans are easy to select and order – our online Fan Selector tool is easy to use and will give all information needed to design your application. We are also focused on providing great after-sales support – from installation and commissioning to regular servicing. In short; Woods Air Movement is a complete partner for all your fan needs.

## SUITABLE APPLICATIONS

---

- Data centers, general supply & exhaust applications, and kitchen
- In-duct ventilation in hotels, offices and other buildings.
- Can be used for internal and external applications.
- T120 model can be used in air temperatures up to 248 °F and installations that have steam.

# A great fit for all your box fan needs

Our new PowerBox<sup>3</sup> can be used for supply or exhaust air applications and can be installed in any position. The units can be installed with perpendicular (90°) discharge in all vertical and horizontal directions. They can be quickly reconfigured by changing panels to provide an inline outlet flow.



Our team is always happy to answer your questions. You can contact us on:

- 629 335 9888
- sales.us@flaktgroup.com
- woodsairmovement.com



## Our reach across North America

Our USA headquarters located in Murfreesboro, Tennessee operates with a truly international distribution network – ensuring our products and services are available wherever our customers need them.

At Wood Air Movement, our reach across North America is built on responsive service, local support, and dependable manufacturing capabilities that help customers move quickly from specification to delivery. Headquartered in Murfreesboro, our U.S. operations position us to efficiently support customers throughout the United States and across North America. From OEM partners and distributors to commercial and industrial end users, we provide reliable air movement solutions backed by technical expertise and responsive customer support.

### **Our North American footprint allows us to:**

- Serve customers across the USA, Canada, and Mexico
- Provide faster communication, logistics, and after-sales support
- Support regional inventory and product availability
- Deliver application-focused solutions for commercial and industrial markets
- Respond quickly to market demands with locally assembled products

With our new box fan product now available to market, Wood Air Movement continues expanding its product offering with solutions designed for performance, durability, and dependable airflow. Supported by our Tennessee headquarters and growing North American network, we are committed to delivering quality products and strong customer partnerships across the region.



# PowerBox<sup>3</sup> delivers outstanding performance for a **wide range** of applications

- › VOLUME FLOW RATE UP TO 10,000 CFM
- › STATIC PRESSURE UP TO 4.4 INWG
- › AIR TEMPERATURE UP TO 122 °F

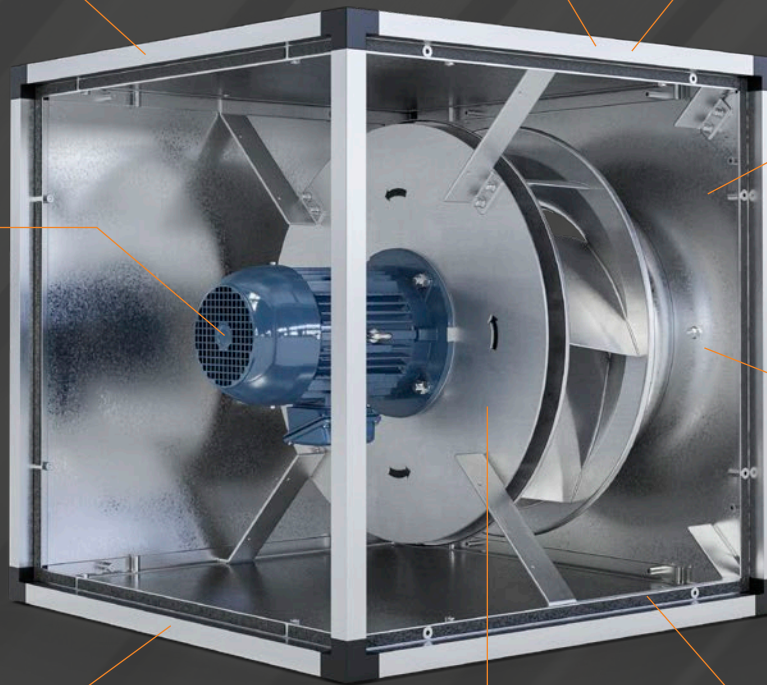
All aluminium Pentapost frame and corner design provides a sturdy and robust structure.

This product must be used with the preprogrammed Inverter supplied by Woods.



Panel with handle installed to aid for easy removal.

Choice of 3 box sizes with multiple air performance options.



Capable of handling air temperatures up to 122 °F.

Panels designed for quick and easy removal during installation and to provide access for maintenance.

Thermally insulated double skinned galvanised steel panels reduce breakout noise to a minimum.

Highly efficient, low-noise backward curved centrifugal impeller. Rugged aluminium construction withstands harsh operation and high temperature.

Grease resistant gasket to prevent leakage.

## Discharge options



› PERPENDICULAR (90°) DISCHARGE

› INLINE (180°) DISCHARGE

# PowerBox<sup>3</sup> T120 is the right solution for **high temperature and steam** applications

- › VOLUME FLOW RATE UP TO 9,800 CFM › STATIC PRESSURE UP TO 4.15 INWG
- › AIR TEMPERATURE UP TO 248 °F

Casing made from pre-galvanised sheet steel BS EN 10346: 2009 DX 51D + Z 275G/M2

Quick and easy to maintain

Choice of 3 box sizes with multiple air performance options.

This product must be used with the preprogrammed Inverter supplied by Woods.

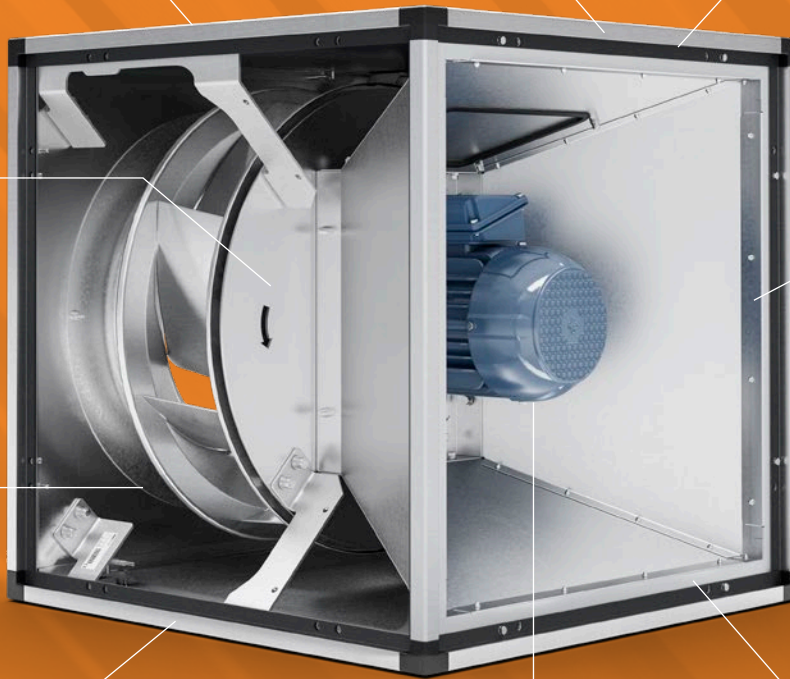
Capable of handling steam and air temperatures up to 248 °F.

90° discharge

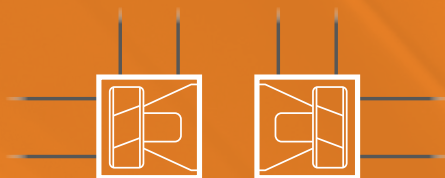
Thermally insulated double skinned galvanised steel panels reduce breakout noise to a minimum.

High efficiency motors (placed out of airstream). Class F motors with IP55 protection.

Panels designed for quick removal during installation and to provide easy access for maintenance.



Discharge options



- › T120 (HIGH TEMPERATURE) PERPENDICULAR (90°) DISCHARGE ONLY

# Inside, outside, floor, wall or roof – the flexible PowerBox<sup>3</sup> is always a reliable choice

The PowerBox<sup>3</sup> can be floor or wall-mounted, internally, and externally as standard. These being centrifugal fans, the PowerBox<sup>3</sup> range is most suitable for installations where there is high static pressure due to length of duct run, filtration, number of direction changes etc.

With five possible discharge directions, the PowerBox<sup>3</sup> gives the flexibility to install under different site conditions. They can be placed on anti-vibration mounting tracks to reduce vibration transfer through the mounting surface and can also be connected using flexible connectors to reduce transmission of vibration to the ductwork. During installation, extra care should be taken to check if the wall/ roof or the fan clamp can handle the fan weight and/or vibration.



› WALL-MOUNTED\*



› FLOOR-MOUNTED



› ROOF-MOUNTED

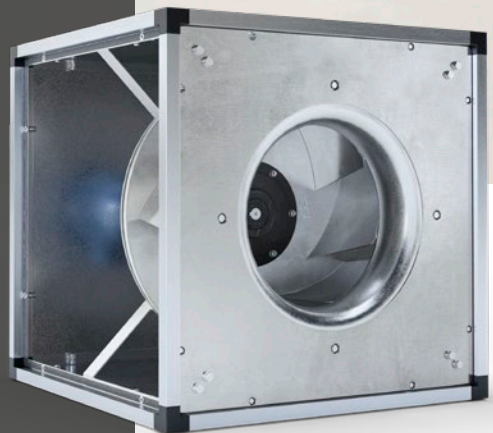
*\*Mounting brackets are not supplied by Woods Air Movement. Please note that these illustrations are for marketing purposes, we would recommend when installing that you use best practice.*



## PowerBox<sup>3</sup>

– a key ingredient for an efficient kitchen ventilation system

This product seamlessly integrates into your kitchen environment, ensuring minimal disruption while delivering maximum performance. It's the perfect blend of form and function, combining sleek design with industry-leading extraction capabilities. Efficiently removing fumes and smoke from your kitchen space.



# PowerBox<sup>3</sup> specifications

## PRODUCT FACTS

- Airflow rate up to 10,000 CFM
- Static pressure up to 4.4 inwg
- Capable of handling air temperatures up to 122 °F.
- Available in 7 inlet spigot sizes:  
315, 355, 400, 450, 500, 560, 630 mm
- High efficiency motor.
- Box sizes (side lengths): 500, 670, 800 mm
- All aluminium Pentapost frame and corner design provides a sturdy and robust structure.
- Highly efficient, low-noise backward curved centrifugal impeller. Rugged aluminium construction withstands harsh operation and high temperature.
- Thermally insulated double skinned galvanised steel panels reduce breakout noise to a minimum.
- Perpendicular (90°) discharge options in all vertical and horizontal directions. Can be quickly reconfigured to provide an inline outlet flow.
- Quick and easy to maintain.

## CONSTRUCTION

The casing is made from pre-galvanised sheet steel BS EN 10346: 2009 DX 51D + Z 275G/M2 with double chambered aluminium supporting frames and corners. The thermal insulation is achieved using glass fibre sheets. The unit can be mounted vertically or horizontally and has removable side panels.

## IMPELLER

The unit is equipped with a highly efficient, low-noise backward curved centrifugal impeller. Its rugged aluminium construction withstands harsh operation and high temperature and is dynamically balanced to ISO 21940-11 grade G6.3.

## SPEED CONTROLLER

The fans are operated and controlled using Woods supplied speed control drives. Variable frequency drive / inverter drive supplied with all units – preprogrammed ready for use

## ELECTRICAL SUPPLY

- 440–480V / 60 Hz / 3 phase

## TEMPERATURE RANGE

- Up to 122 °F

## INLET CONNECTION FLANGE

- 315, 355, 400, 450, 500, 560, 630 mm

## MOTOR

The units are equipped with direct drive high efficiency motors with ingress protection to IP55.

## PRODUCT NAME

**POWERBOX<sup>3</sup> – AA – BBB – C**

- POWERBOX<sup>3</sup> – Fan name
- AA – Box size (67, 80 cm, etc.)
- BBB – Spigot diameter (500, 560 mm, etc.)
- C – 3 Phase

## AVAILABLE ACCESSORIES

- Mounting tracks complete with A/V mounts
- Square to round transformation
- Flexible connectors
- Inverters
- Inlet spigot
- Weatherproof

*For more information and part numbers – please view our Fan Selector or our online Accessories Catalogue.*



# PowerBox<sup>3</sup> T120 specifications

MOTOR OUT OF AIR STREAM

## PRODUCT FACTS

- Airflow rate up to 9800 CFM
- Static pressure up to 4.15 inwg
- Capable of handling air temperatures up to 248 °F.
- Available in 7 size options:  
315, 355, 400, 450, 500, 560, 630 mm
- Box sizes: 500, 670 and 800 mm
- High efficiency motor out of airstream.
- Casing made of galvanised steel with aluminium Pentapost frame and corner design to provide robustness to the structure.
- High efficiency backward curved centrifugal impeller made of aluminium.
- Low sound level due to thermally insulated double skinned galvanised steel panels filled with glass fibre.
- Perpendicular (90°) discharge options available. Quickly re-configurable.
- Quick and easy to maintain (minimal maintenance required).

## CONSTRUCTION

The casing is made from pre-galvanised sheet steel BS EN 10346: 2009 DX 51D + Z 275G/M2 with double chambered aluminium supporting frames and corners. The thermal insulation is achieved from glass fibre with a thickness of 18–26 mm (depending on fan size). The fans can be mounted vertically or horizontally and has removable side panels.

## IMPELLER

The fan is equipped with high efficiency, low noise backward curved centrifugal impeller wheel made of aluminium to withstand harsh operation and high temperature. The impellers are dynamically balanced as per ISO 21940-11 grade G6.3.

## SPEED CONTROLLER

The fans are operated and controlled using Woods supplied speed control drives. Variable frequency drive / inverter drive supplied with all units – preprogrammed ready for use.

## ELECTRICAL SUPPLY

- 440–480V / 60 Hz / 3 phase

## TEMPERATURE RANGE

- Up to 248 °F

## INLET CONNECTION FLANGE

- 315, 355, 400, 450, 500, 560, 630 mm

## MOTOR

The fans are equipped with direct driven high efficiency motors (placed out of airstream). Class F motors with IP55 protection.

## PRODUCT NAME

PowerBox<sup>3</sup> T120 – AA – BBB – C

- PowerBox<sup>3</sup> T120 – Fan name
- AA – Box size (50, 67, 80, etc.)
- BBB – Spigot diameter (500, 560mm, etc.)
- C – 3 Phase

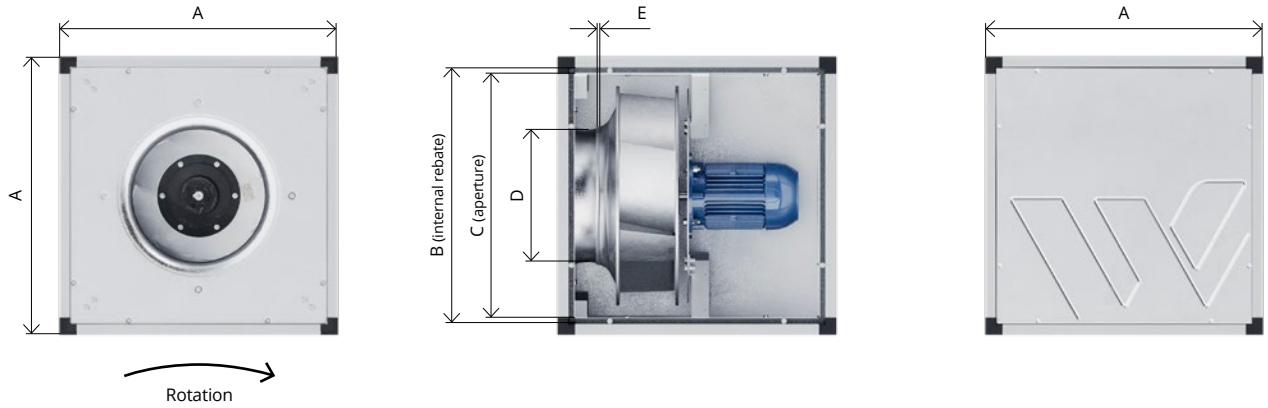
## AVAILABLE ACCESSORIES

- Mounting tracks with A/V mounts
- Square to round transforms
- Flexible connectors
- Inverters
- Inlet spigot
- Weatherproof

*For more information and part numbers – please view our Fan Selector or our online Accessories Catalogue.*

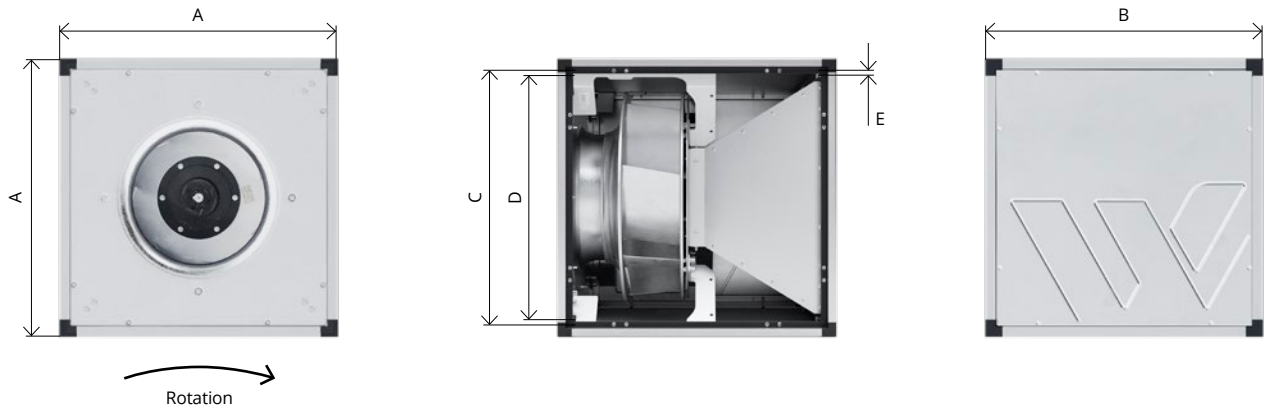
# Dimensions & weights

## POWERBOX<sup>3</sup>



Ø (in)	Weight (lbs)	A (in)	B (in)	C (in)	D (in)	E (in)
12.40	85	19.69	18.11	16.93	8.58	0.12
13.98	88	19.69	18.11	16.93	9.70	0.14
15.75	138	26.38	24.80	23.62	10.94	0.16
17.72	148	26.38	24.80	23.62	12.28	0.18
19.69	174	26.38	24.80	23.62	13.64	0.20
22.05	255	31.50	29.13	27.56	15.28	0.22
24.80	264	31.50	29.13	27.56	17.20	0.25

## POWERBOX<sup>3</sup> T120



Ø (in)	Weight (lbs)	A (in)	B (in)	C (in)	D (in)	E (in)
12.40	86	19.69	19.69	18.11	16.93	0.59
13.98	89	19.69	19.69	18.11	16.93	0.59
15.75	139	26.38	26.38	24.80	23.62	0.59
17.72	149	26.38	26.38	24.80	23.62	0.59
19.69	175	26.38	26.38	24.80	23.62	0.59
22.05	258	31.50	31.50	29.13	27.64	0.75
24.80	266	31.50	31.50	29.13	27.64	0.75

# Available accessories



For more information and accessory and spares part numbers – please view our Fan Selector or our online Accessories Catalogue.

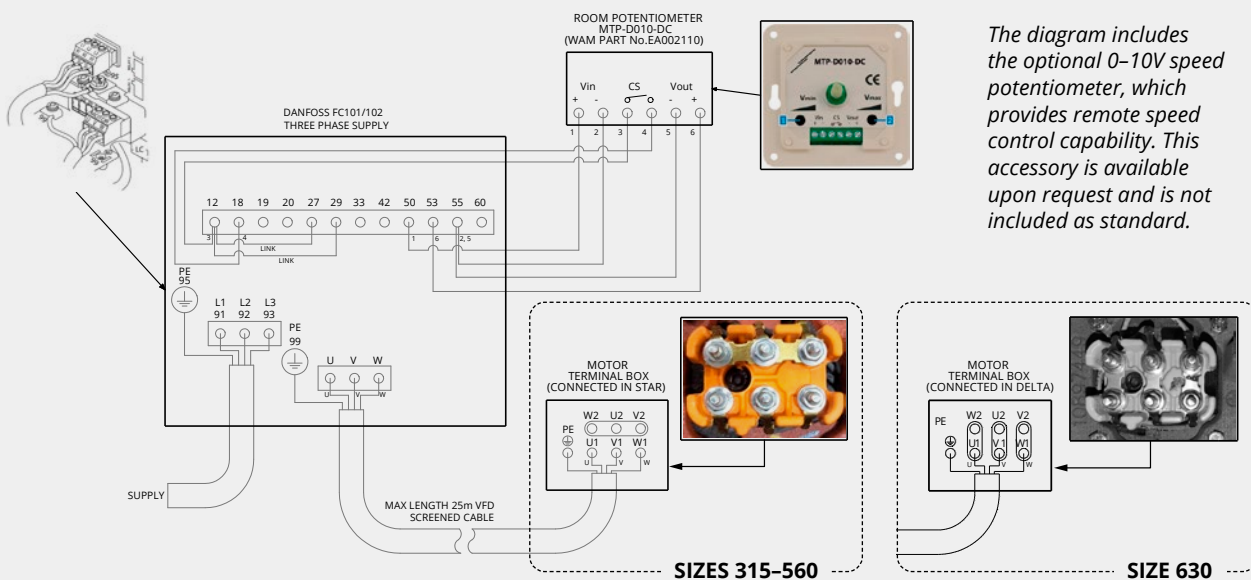
- 1. PowerBox<sup>3</sup>
- 2. Square flexible connector (please ensure the correct temperature flexible connector is used)

- 3. Mounting tracks complete with A/V mounts
- 4. Inlet connection flange

- 5. Circular flexible connector and clips (please ensure the correct temperature-rated flexible connector is used)

- 6. Square to round transformation
- 7. Weather roof
- 8. Grease resistant gasket

## THREE PHASE / IDDXF54, IDDXF55, IDDXF66



# Woods Air Movement has a range of standard products – or designs and develops a wide range of products

We manufacture a range of air movement and ventilation products that are the most reliable and of the best quality for various applications and industries. To ensure you receive the best quality, we run various tests on our fans before they are delivered to your doorstep.

Most of our product range is available as standard or high temperature, please contact one of our sales team members to find out more technical information on our products.

If any of our products do not meet your requirements then we have in-house capabilities to assist with designing, engineering and manufacturing the perfect solution for you.

## ENSURING THE BEST POSSIBLE QUALITY IN EVERY DETAIL FOR OUR AXIAL FAN RANGE

- All impeller parts are X-ray inspected in accordance with ASTM E155.
- We ensure our products follow the ISO1940 Balance standards and Vibration BS848 pt 7 ISO14694.
- Our fans endure impeller strain gauge tests of speed over 125% for 15min.

> [WOODSAIRMOVEMENT.COM](http://WOODSAIRMOVEMENT.COM)



## PRODUCT SELECTION AND CONFIGURATION HAS NEVER BEEN EASIER – OR MORE POWERFUL

We always try to make the selection of our products as easy, accurate and fast as possible. With the brand new release of our Fan Selector we have taken a huge step forward and we hope that you will enjoy the many new features and functions – including web-based multi-platform accessibility with touch interface and interactive performance charts.

# Building on more than 100 years of innovation

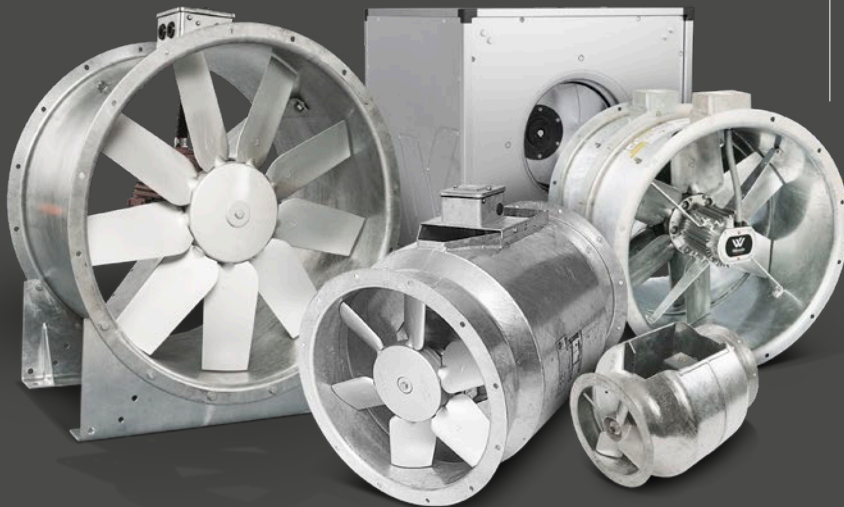
Woods was founded in 1909 in Colchester, United Kingdom, where our products are still proudly manufactured today. We began as manufacturers of small electric motors and introduced a range of propeller fans in the 1920s.



Over the years, Woods moved away from manufacturing motors and concentrated on the design and manufacture of axial fans, developing the first aerofoil blade design. This continuous development has evolved into one of the world's largest ranges of certified axial fans for almost any application imaginable including fire safety, ventilation, industrial process, oil and gas and marine.

Woods was merged with Fläkt in 2002 to create Fläkt Woods which was subsequently merged with Denco Happel in 2016 to create FläktGroup. In 2020, Fläkt Woods changed their trading name to Woods Air Movement under FläktGroup holdings and opened offices in the United States of America, Germany and Singapore.

**Woods has over 100 years of experience and knowledge in designing axial flow fans and remains a distinct brand within the FläktGroup family.**



## OUR FOOTPRINT

Our head office is situated in Colchester in the United Kingdom with the state of the art factory. We also have a factory and office in the United States of America and Singapore as well as an office situated in Germany. In India we have installed one of the first test rigs in the country. Our products are distributed and reach various markets globally, through strong partnerships with over 70 international distributors and agents.



Woods Air Movement delivers smart and energy efficient Air Movement and Fire Safety solutions to support every application area. We offer our customers innovative technologies, high quality and outstanding performance. The widest range of Air Movement and Ventilation products in the market, and strong market presence with over 100 years of experience and manufacturing of products, guarantees that we are always by your side, ready to deliver Excellence in Solutions.

**Contact our friendly sales team today  
for more information**

Call: 629 335 9888

Email: [sales.us@flaktgroup.com](mailto:sales.us@flaktgroup.com)

[www.woodsairmovement.com](http://www.woodsairmovement.com)

